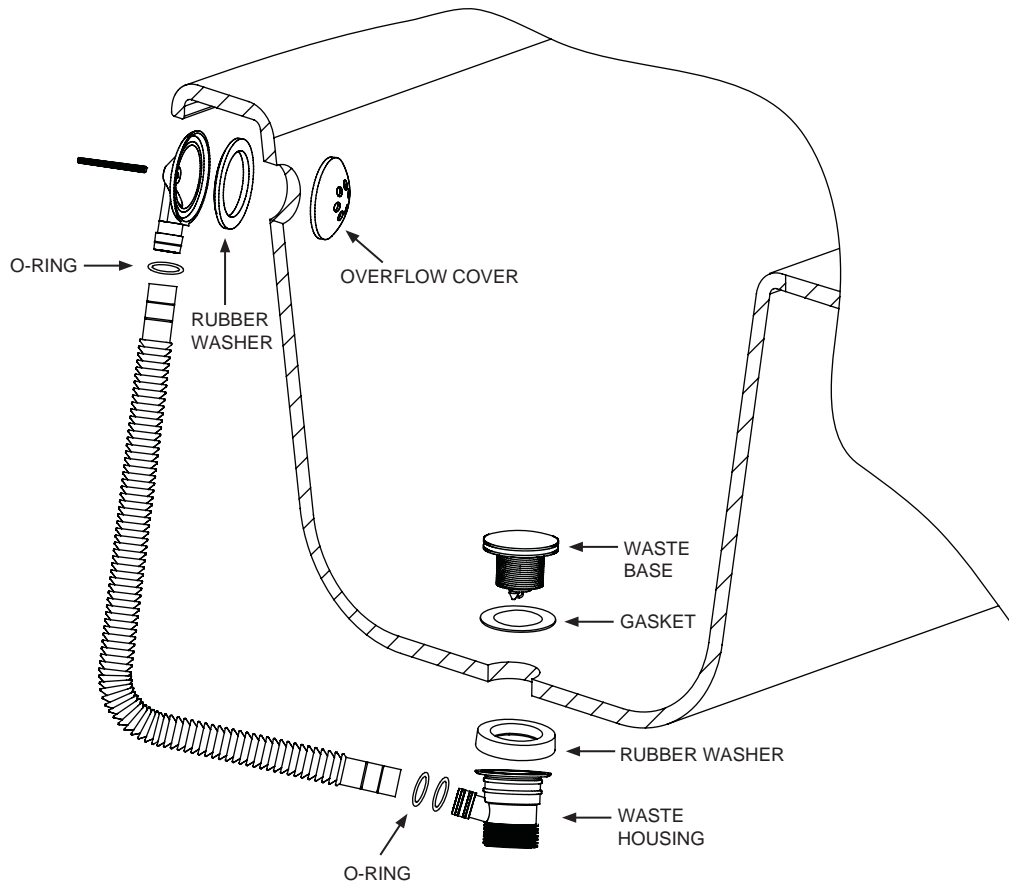


BATH CLICK CLACK WASTE

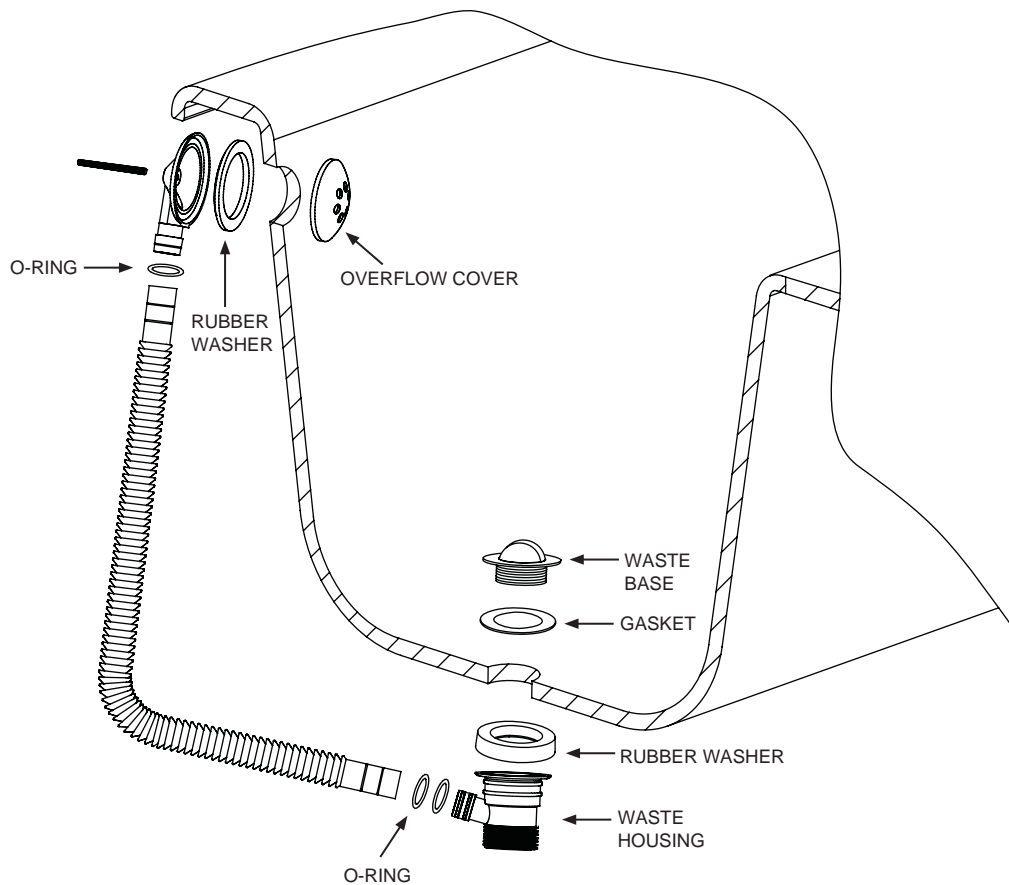


Installation

1. Remove the screw from waste part.
2. Put the waste base and gasket into the bottom waste hole of bath. Place the rubber washer and waste housing onto the waste from the backside of bath in sequence.
3. Tighten all the above elements together with the waste screw.
4. Take off the screw from the overflow part.
5. Put the gasket into overflow housing. Then hold this unit in position from the backside of the bath.
6. Place the following items onto the overflow housing in sequence: overflow cover , ceramic annulus and overflow base.
7. Tighten all the items together with the overflow screw.

INSTALLATION INSTRUCTIONS

BATH FLIP TOP WASTE



Installation

1. Remove the screw from waste part.
2. Put the waste base and gasket into the bottom waste hole of bath. Place the rubber washer and waste housing onto the waste from the backside of bath in sequence.
3. Tighten all the above elements together with the waste screw.
4. Take off the screw from the overflow part.
5. Put the gasket into overflow housing. Then hold this unit in position from the backside of the bath.
6. Place the following items onto the overflow housing in sequence: overflow cover , ceramic annulus and overflow base.
7. Tighten all the items together with the overflow screw.

INSTALLATION INSTRUCTIONS